

CERTIFICATE OF ANALYSIS

PRODUCT NAME: *Certified Organic - Full Spectrum CBD Tincture - Natural
PRODUCT STRENGTH: 450 mg per bottle
TINCTURE BATCH: 21258A
BEST BY DATE: 03/15/2023
HEMP EXTRACT LOT: B1211-001

Click on the links to view third-party reports

Physical Attributes

Test	Method	Specification	Results
Color	Internal	Golden to Amber	PASS
Odor	Internal	Characteristic - Olive and Hemp	PASS
Appearance	Internal	Golden to Amber oil in brown glass bottle with dropper.	PASS
Primary Package Eval.	Internal	Container clean and free of filth. Container caps tight and shrink bands intact	PASS
Secondary Package Eval.	Internal	Labeling Compliance Checked, Cartons sturdy and clean. Sufficient cushion material exists. Box taped and secure.	PASS

Review of Third-Party Analysis

Panel	Method	Specification	Results*	Pass/Fail
Potency - Total CBD	HPLC-UV DAD	LOQ**: ≥ product strength mg / bottle	(*) "a [PASS
Potency - D9-THC	HPLC-UV DAD	LOQ: <0.3% total THC (Full spectrum)	\$\$\$) i	PASS
Expanded Pesticide Panel	HPLC-QQQ	LOQ: Complies with CDPHE 6 CCR 1010-21 Industrial Hemp Extract	Below LOQ	PASS
Microbial Escherichia coli (STEC)	PCR	Complies with CDPHE 6 CCR 1010-21 - LOQ 1 CFU/25 gram***	Absent	PASS
Microbial Salmonella	PCR	Complies with CDPHE 6 CCR 1010-21 - LOQ 1 CFU/25 gram	Absent	PASS
Microbial Yeast and Mold	Culture Plating	Complies with CDPHE 6 CCR 1010-21 - LOQ 10 ² CFU/gram	Below LOQ	PASS
Microbial Total Coliforms	Culture Plating	Complies with CDPHE 6 CCR 1010-21 - LOQ 10 ² CFU/gram	Below LOQ	PASS
Microbial Total Aerobic Count	Culture Plating	Complies with CDPHE 6 CCR 1010-21 - LOQ 10 ³ CFU/gram	Below LOQ	PASS
Heavy Metals	ICP-MS	Arsenic (As): ≤1.5 ppm† Cadmium (Cd): ≤0.5 ppm Lead (Pb): ≤0.5 ppm Mercury (Hg): ≤1.5 ppm	Below LOQ	PASS
Mycotoxins	ICP-MS	Total Aflatoxins <20 ppb†† Aflatoxin B1 < 20 ppb Ochratoxin < 20 ppb	Below LOQ	PASS
Residual Solvents	GC-HS-MSD	LOQ: Complies with CDPHE 6 CCR 1010-21 Industrial Hemp Extract	Below LOQ	PASS

*Only applies to products with labels claiming certified organic
 **Level of Quantification
 ***Colony Forming Units per Gram
 † Parts Per Million †† Part Per Billion
 Values expressed in scientific notation.
 Examples:
 10²=100
 10³=1,000

Quality Certified Kayla Kolber 09/21/2021
 Kayla Kolber _____ Date
 Quality Assurance Technician



B1211-001

7USC1639 Certificate of Analysis

sample ID 25408

Stillwater Laboratories

certificate ID OMN52

total cannabinoids 510.4mg per 30mL
THC± 15.1mg CBD± 465.7mg

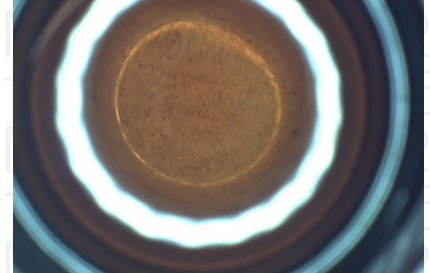
order 9236

analysis date 12/15/2020 4:57:23 PM

test tag B1211-001

sample wgt 1.0 g

7USC1639 Infused



Inspection MSP-7.5.1.2

DESCRIPTION: Tincture sample (1.00g) received in a client-labeled bottle, by commercial courier. Labeled 25408 and sample tag B1211-001.

Potency per 30mL

Table with columns: Compound, Amount, LOD, LOQ, error (95%CI k=2). Rows include THC, CBD, and various cannabinoids.

± = decarbed NT = not tested NL = no limit, ND = not detected, LOD = detection limit, LOQ = quantitation limit

Large table with columns: Microbial, Solvents, Metals, Pesticides. Contains various test results and limits.

SECURITY FEATURE: WATERMARK MUST MATCH CERTIFICATE ID AND ISSUE DATE

Certified by:

Signature of Kyle Larson

Kyle Larson, MSc (Biology) Deputy Director

Stillwater Laboratories Inc. MT License L00001, 7, 8 6073 US93N Suite 5 Olney MT 59927 406-881-2019

Printed 12/17/2020 3:27 PM

The data in this report is the property of and is administered by Stillwater Labs. The format, layout, and security features of this report are copyrighted by Stillwater Laboratories Inc. © 2020



ISO/IEC 17025:2017



Certificate #4961.01

https://portal.a2la.org/scopepdf/4961-01.pdf

OFTNAT450

Batch ID or Lot Number: 21258A	Test: Microbial Contaminants	Reported: 9/20/21	
Matrix: Finished Product	Test ID: T000164001	Started: 9/16/21	USDA License: N/A
Status: N/A	Methods: TM25 (qPCR) TM24, TM26, TM27(Culture Plating): Microbial (Colorado Panel)	Received: 09/16/2021 @ 10:43 AM	Sampler ID: N/A

MICROBIAL CONTAMINANTS DETERMINATION

Contaminant	Method	LOD	LLOQ	ULOQ	Result	Notes
Total Aerobic Count*	TM-26, Culture Plating	10 ² CFU/g	10 ³ CFU/g	1.5x10 ⁵ CFU/g	None Detected	Free from visual mold, mildew, and foreign matter
Total Coliforms*	TM-27, Culture Plating	10 ² CFU/g	10 ² CFU/g	1.5x10 ⁴ CFU/g	None Detected	
Total Yeast and Mold*	TM-24, Culture Plating	10 ² CFU/g	10 ² CFU/g	1.5x10 ⁴ CFU/g	None Detected	
E. coli (STEC)	TM-25, PCR	1 CFU/25 g	NA	NA	Absent	
Salmonella	TM-25, PCR	1 CFU/25 g	NA	NA	Absent	



 Carly Bader
 9/19/2021
 1:34:00 PM



 Tori King
 9/20/2021
 2:27:00 PM

PREPARED BY / DATE

APPROVED BY / DATE

Definitions

LOD = Limit of Detection | LLOQ = Lower Limit of Quantitation | ULOQ = Upper Limit of Quantitation

 CFU/g = Colony Forming Units per Gram | STEC = Shiga Toxin-Producing *E. coli*

* Values recorded in scientific notation, a common microbial practice of expressing numbers that are too large to be conveniently written in decimal form.

 Examples:
 10² = 100 CFU
 10³ = 1,000 CFU
 10⁴ = 10,000 CFU
 10⁵ = 100,000 CFU

Testing results are based solely upon the sample submitted to Botanacor Laboratories, LLC, in the condition it was received. Botanacor Laboratories, LLC warrants that all analytical work is conducted professionally in accordance with all applicable standard laboratory practices using validated methods. Data was generated using an unbroken chain of comparison to NIST traceable Reference Standards and Certified Reference Materials. This report may not be reproduced, except in full, without the written approval of Botanacor Laboratories, LLC.



CDPHE Certified



Certificate #4329.02